

em1

asbestos essentials

Non-licensed tasks

This information will help employers and the self-employed to comply with the Control of Asbestos Regulations 2012.

It is also useful for trade union and employee safety representatives.

Only carry out work if you are properly trained and have the right equipment.

Remember:

- Asbestos fibres can cause lung cancer and lung diseases.
- Check it out before you start work.
- Read the safety checklist on the task sheet.

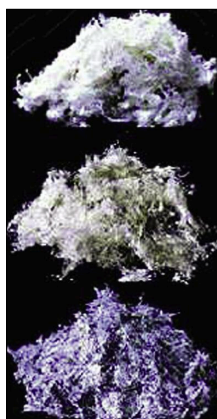
What to do if you uncover or damage materials that may contain asbestos

Equipment and method sheet

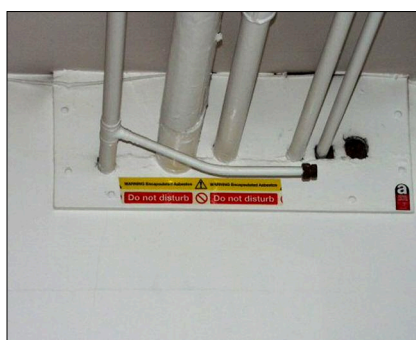
What this sheet covers

This sheet shows some examples of where asbestos can be found. A chart describes what to do if you find asbestos materials during a job.

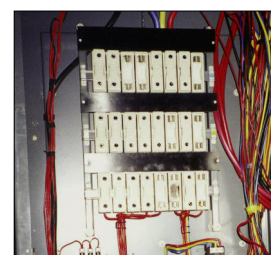
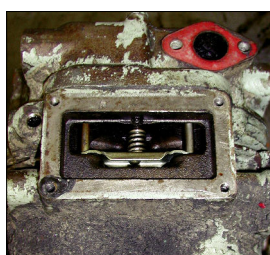
It also applies where asbestos materials get damaged by accident.



There are three 'colours' of asbestos, but you can't tell just by the colour what you have found; it could be mixed with other ingredients which change the appearance.



Don't assume there will always be warning signs. There could be undiscovered asbestos in buildings you work on.



Asbestos isn't always obvious. Would you spot an asbestos gasket on an old engine, asbestos cement pipes or an asbestos-containing fuse-board? If you're not sure, the premises owner needs to get it checked out!



Asbestos
lagging on an
old tank



Asbestos insulating
board (AIB)
fire surround



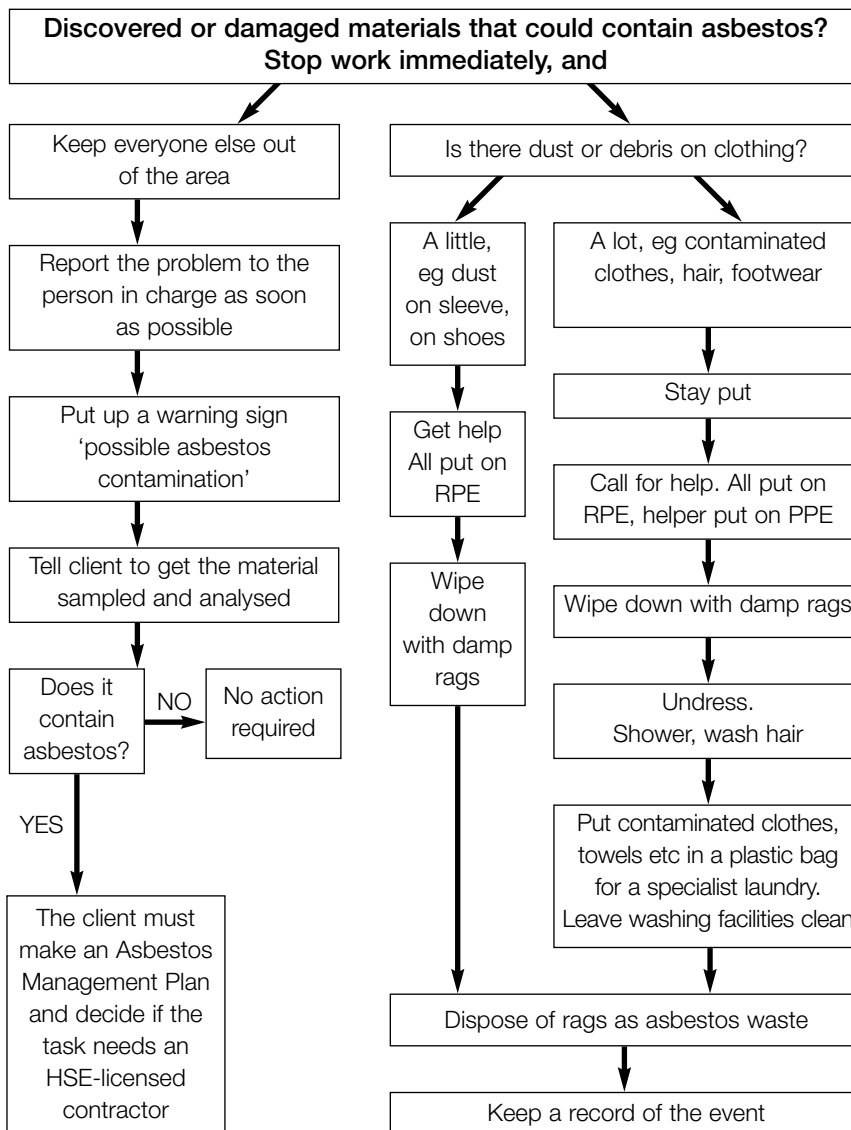
These asbestos cement pipes are labelled, so are the tiles, but you might not know until you start to lift them.



There could be sprayed
limpet under this asbestos
cement (AC) sheeting

MORE HELP

- **More asbestos pictures** - www.hse.gov.uk/asbestos/gallery.htm
- **Help to decide if work is licensed** - www.hse.gov.uk/asbestos/licensing/index.htm
- For information about health and safety, or to report inconsistencies or inaccuracies in this guidance, visit www.hse.gov.uk/. You can view HSE guidance online or order priced publications from the website. HSE priced publications are also available from bookshops.
- These equipment and method (em) sheets and task (a) sheets can be downloaded free from www.hse.gov.uk/asbestos/essentials/index.htm
- See sheet a0 for details of more guidance.



Procedures

- Stop this work immediately.
- Follow the chart above or do a risk assessment to decide who must do the work - you may need a licensed contractor.
- Minimise the spread of contamination to other areas.
- Keep exposures as low as you can.
- Clean up the contamination.

This guidance is issued by the Health and Safety Executive. Following the guidance is not compulsory and you are free to take other action. But if you do follow the guidance you will normally be doing enough to comply with the law. Health and safety inspectors seek to secure compliance with the law and may refer to this guidance as illustrating good practice.

This document is available at www.hse.gov.uk/asbestos/essentials/index.htm

© Crown copyright If you wish to reuse this information visit www.hse.gov.uk/copyright for details. First published as part of *Asbestos Essentials Task Manual* 2001.

Published by the Health and Safety Executive 04/12